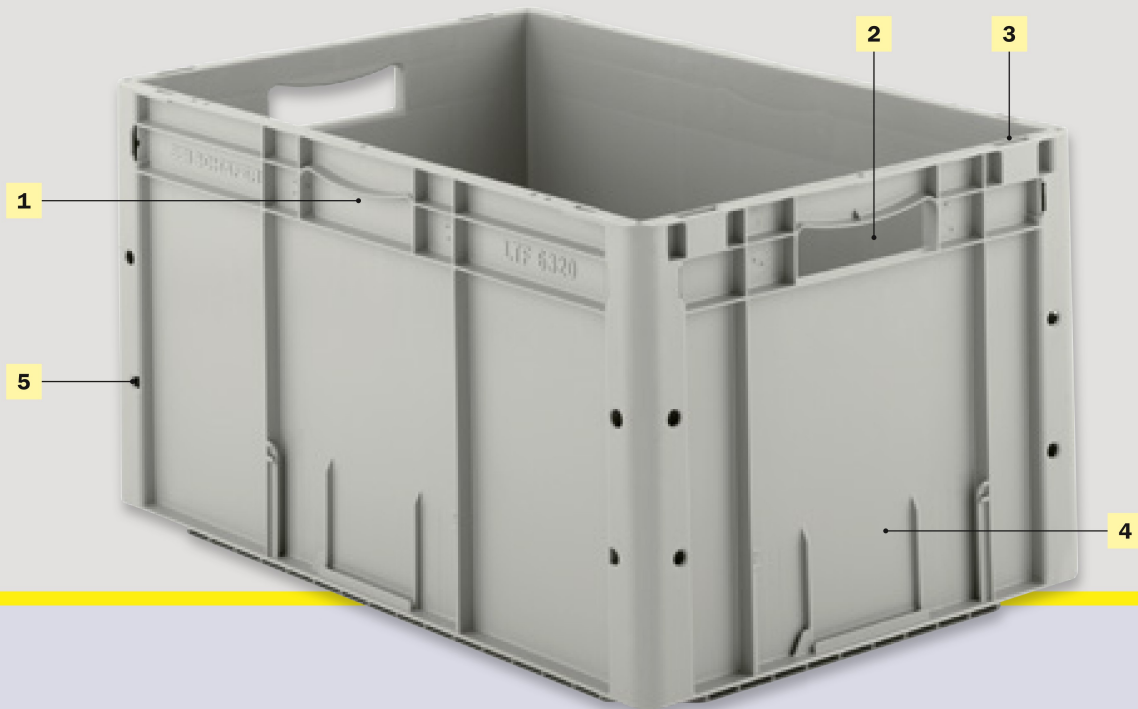


LTF – back to basics

When we developed our LTF range, we had one goal in mind: to create an entry-level product for companies adopting warehouse automation for the first time. We wanted to design containers that would make light work of all material flows, despite being pared down to the bare minimum. Impossible? Not with LTF.

LTF containers are high in quality, yet affordable – enabling efficient storage and conveying for businesses just beginning to automate. The LTF range offers models with a variety of bases, for loads of up to 70 kg.



1| Hand grip*
on both long sides



2| Ergonomic hand hole
on both short sides



3| Lifting slots
for materials handling devices



4| Label holders on long and short sides or
on long sides only for 120 mm containers



5| Strong corners thanks to reinforcing
columns; with holes for alignment

*Except for 120-mm-high containers

6| Standard base (max. load 30 kg)
with smooth running frame; lighter model for conveyor systems

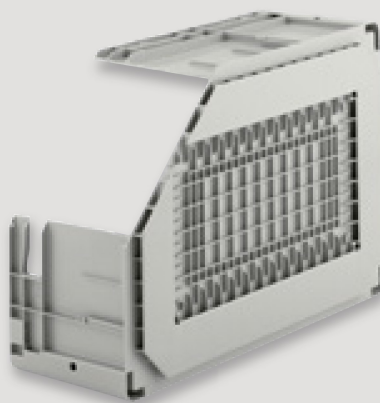
7| VB01 reinforced, diagonally ribbed base (max. load 50 kg)
for heavy loads

8| VB02 reinforced, diagonally ribbed base (max. load 50 kg)
with additional ribbing on base surround for smooth conveying and heavy loads

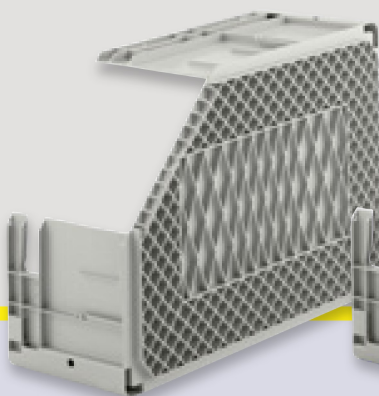
9| VS01 reinforced welded base (max. load 70 kg)
with rounded edges for smooth conveying and heavy loads

Also available with drainage holes in the base, in accordance with the VDS directive for HHS 3 classification.

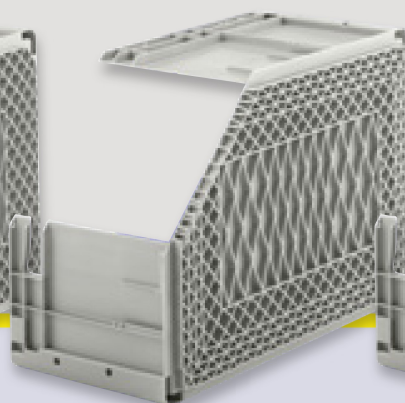
6| Standard base



7| VB01



8| VB02



9| VS01



10| Drop-on lid
dustproof, can be secured with tamper proof seals



11| Label clip
for accompanying documents



Standard colours:



Standard models

600 x 400 x 120 mm



LTF 6120 PP		
External dimensions L x W x H	594 x 396 x 120 mm	
Internal dimensions L x W x H	564 x 366 x 102 mm	
Internal height when stacked	87 mm	
Capacity	21.0 Litres	
Max. load	30 kg	
Colour	Blue	Grey
Order no.	35714	35715
LTF 6120 VB01 PP with ribbed base		
Internal dimensions L x W x H	564 x 366 x 102 mm	
Internal height when stacked	87 mm	
Capacity	21.0 Litres	
Max. load	50 kg	
Colour	Blue	Grey
Order no.	86084	86085
LTF 6120 VB02 PP with ribbed base		
Internal dimensions L x W x H	564 x 366 x 102 mm	
Internal height when stacked	87 mm	
Capacity	21.0 Litres	
Max. load	50 kg	
Colour	Blue	Grey
Order no.	86094	86095
LTF 6120 VS01 PP with reinforced welded base		
Internal dimensions L x W x H	564 x 366 x 102 mm	
Internal height when stacked	87 mm	
Capacity	21.0 Litres	
Max. load	70 kg	
Colour	Blue	Grey
Order no.	86104	86105

600 x 400 x 220 mm



LTF 6220 PP		
External dimensions L x W x H	594 x 396 x 220 mm	
Internal dimensions L x W x H	564 x 366 x 202 mm	
Internal height when stacked	187 mm	
Capacity	42.0 Litres	
Max. load	30 kg	
Colour	Blue	Grey
Order no.	35724	35725
LTF 6220 VB01 PP with ribbed base		
Internal dimensions L x W x H	564 x 366 x 202 mm	
Internal height when stacked	187 mm	
Capacity	42.0 Litres	
Max. load	50 kg	
Colour	Blue	Grey
Order no.	86114	86115
LTF 6220 VB02 PP with ribbed base		
Internal dimensions L x W x H	564 x 366 x 202 mm	
Internal height when stacked	187 mm	
Capacity	42.0 Litres	
Max. load	50 kg	
Colour	Blue	Grey
Order no.	86124	86125
LTF 6220 VS01 PP with reinforced welded base		
Internal dimensions L x W x H	564 x 366 x 202 mm	
Internal height when stacked	187 mm	
Capacity	42.0 Litres	
Max. load	70 kg	
Colour	Blue	Grey
Order no.	86134	86135

LTF 6280 PP

External dimensions L x W x H	594 x 396 x 280 mm	
Internal dimensions L x W x H	564 x 366 x 262 mm	
Internal height when stacked	247 mm	
Capacity	53.8 Litres	
Max. load	30 kg	
Colour	Blue	Grey
Order no.	35704	35705

LTF 6280 VB01 PP with ribbed base

Internal dimensions L x W x H	564 x 366 x 262 mm	
Internal height when stacked	247 mm	
Capacity	53.8 Litres	
Max. load	50 kg	
Colour	Blue	Grey
Order no.	86144	86145

LTF 6280 VB02 PP with ribbed base

Internal dimensions L x W x H	564 x 366 x 262 mm	
Internal height when stacked	247 mm	
Capacity	53.8 Litres	
Max. load	50 kg	
Colour	Blue	Grey
Order no.	86154	86155

LTF 6280 VS01 PP with reinforced welded base

Internal dimensions L x W x H	564 x 366 x 262 mm	
Internal height when stacked	247 mm	
Capacity	53.8 Litres	
Max. load	70 kg	
Colour	Blue	Grey
Order no.	86164	86165

600 x 400 x 280 mm**LTF 6320 PP**

External dimensions L x W x H	594 x 396 x 320 mm	
Internal dimensions L x W x H	564 x 366 x 302 mm	
Internal height when stacked	287 mm	
Capacity	62.7 Litres	
Max. load	30 kg	
Colour	Blue	Grey
Order no.	35734	35735

LTF 6320 VB01 PP with ribbed base

Internal dimensions L x W x H	564 x 366 x 302 mm	
Internal height when stacked	287 mm	
Capacity	62.7 Litres	
Max. load	50 kg	
Colour	Blue	Grey
Order no.	86174	86175

LTF 6320 VB02 PP with ribbed base

Internal dimensions L x W x H	564 x 366 x 302 mm	
Internal height when stacked	287 mm	
Capacity	62.7 Litres	
Max. load	50 kg	
Colour	Blue	Grey
Order no.	86184	86185

LTF 6320 VS01 PP with reinforced welded base

Internal dimensions L x W x H	564 x 366 x 302 mm	
Internal height when stacked	287 mm	
Capacity	62.7 Litres	
Max. load	70 kg	
Colour	Blue	Grey
Order no.	86194	86195

600 x 400 x 320 mm

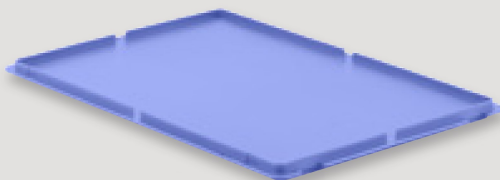
Special-purpose LTF and lids

600 x 400 x 320 mm



LTF 6320 B01 PP one short side ½ open		
External dimensions L x W x H	594 x 396 x 320 mm	
Internal dimensions L x W x H	564 x 366 x 302 mm	
Internal height when stacked	287 mm	
Front opening W x H	275 x 140 mm	
Capacity	62.7 Litres	
Max. load	30 kg	
Colour	Blue	Grey
Order no.	35694	35695
SK 64152-1 PP dust cover		
Colour	Translucent	
Order no.	93922	

Basic size 600 x 400 mm



MF-D 64 PP drop-on lid with banding notches on all sides		
Colour	Blue	Grey
Order no.	39744	39745
MF-D 64-H PP with hooks*		
Colour	Blue	Grey
Order no.	39754	39755
MF-D 64-S PP with hinges		
Colour	Blue	Grey
Order no.	39874	39875
MF-D 64-SF PP factory-fitted lid		
Colour	Blue	Grey
Order no.	39764	39765

* Lid clips available on request



Lid with hooks



Hinged lid with reinforcing ring



Lid clips (available on request)

Pallet covers and accessories

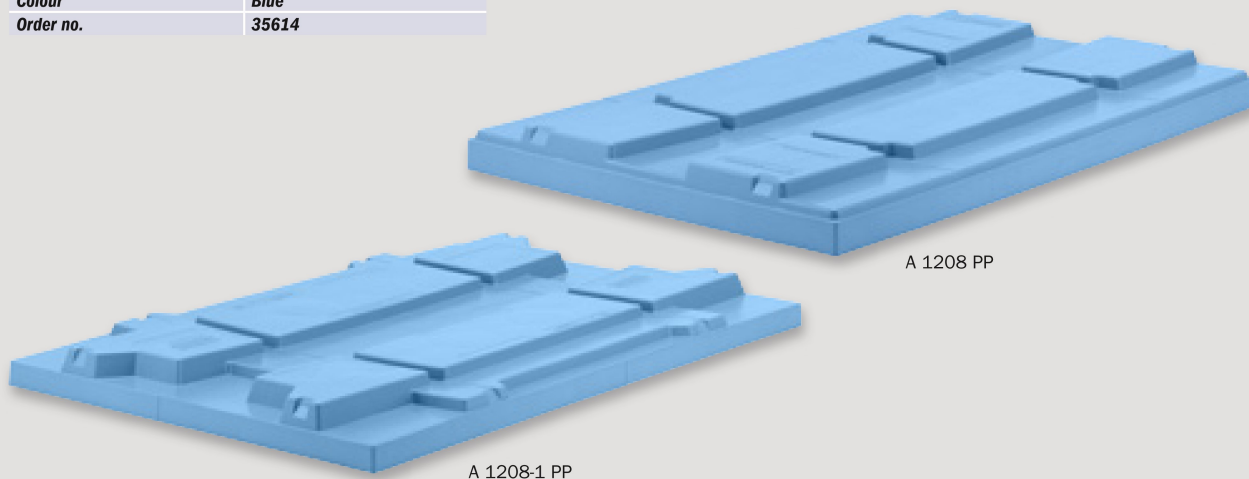
A 1208 PP pallet cover

Colour	Blue
Order no.	39704

A 1208-1 PP pallet cover

Colour	Blue
Order no.	35614

Basic size 1,200 x 800 mm



GV-MF PP

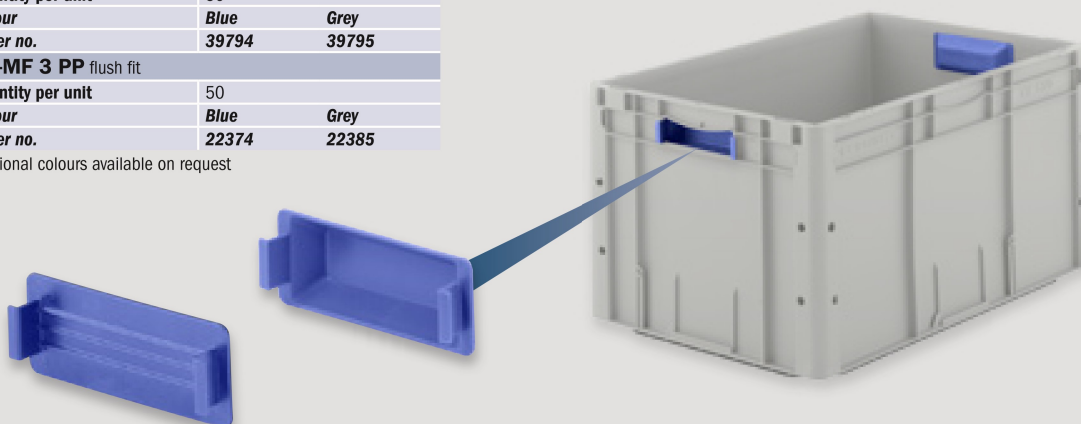
Quantity per unit	50	
Colour	Blue	Grey
Order no.	39794	39795

GV-MF 3 PP flush fit

Quantity per unit	50	
Colour	Blue	Grey
Order no.	22374	22385

Additional colours available on request

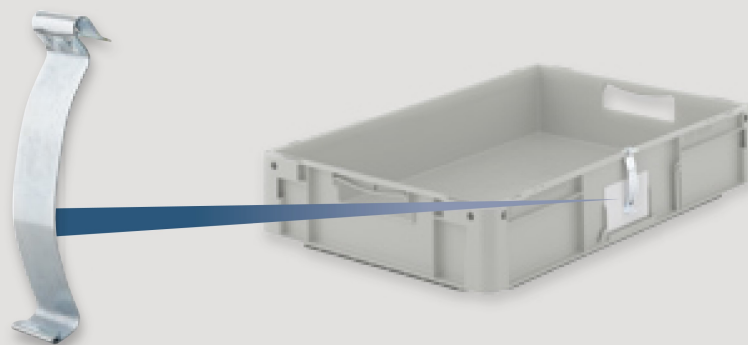
Insertable hand grips



LTF-E

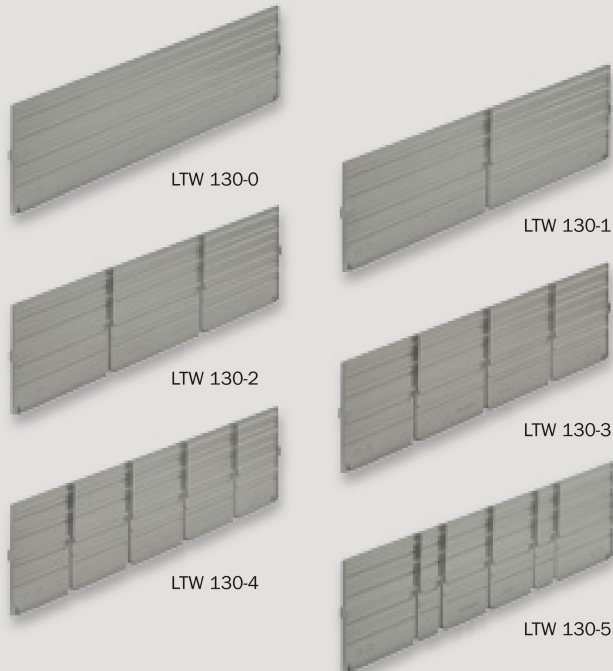
Quantity per unit	1
Order no.	16020

Label clips



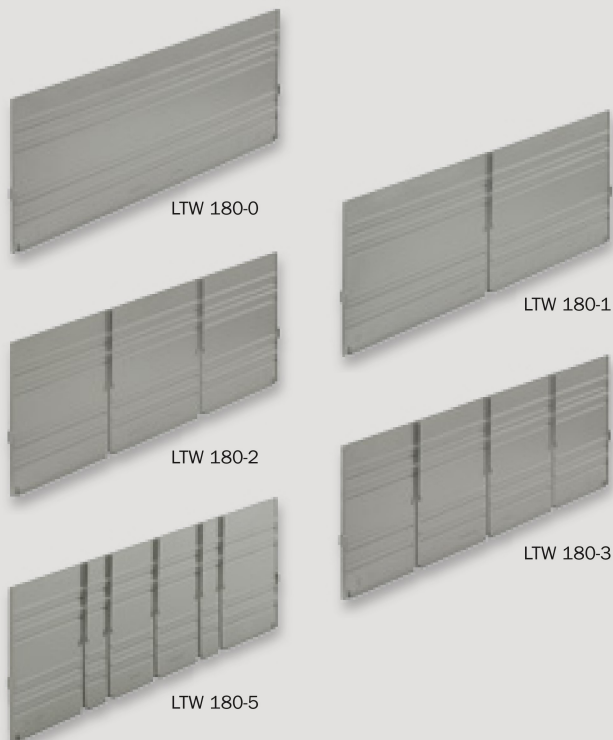
Dividers for basic size 600 x 400 mm

Lengthwise dividers 130 mm



	LTW 130-0 PS	LTW 130-0og PS
For containers with	hand grips	hand holes
Divider height	130 mm	130 mm
No. of slots	-	-
Colour	Grey	Grey
Order no.	187525	187635
	LTW 130-1 PS	LTW 130-1og PS
No. of slots	1	1
Colour	Grey	Grey
Order no.	187535	187645
	LTW 130-2 PS	LTW 130-2og PS
No. of slots	2	2
Colour	Grey	Grey
Order no.	187545	187655
	LTW 130-3 PS	LTW 130-3og PS
No. of slots	3	3
Colour	Grey	Grey
Order no.	187555	187665
	LTW 130-4 PS	LTW 130-4og PS
No. of slots	4	4
Colour	Grey	Grey
Order no.	187565	187675
	LTW 130-5 PS	LTW 130-5og PS
No. of slots	5	5
Colour	Grey	Grey
Order no.	187575	187685

Lengthwise dividers 180 mm



	LTW 180-0 PS	LTW 180-0og PS
For containers with	hand grips	hand holes
Divider height	180 mm	180 mm
No. of slots	-	-
Colour	Grey	Grey
Order no.	187585	187695
	LTW 180-1 PS	LTW 180-1og PS
No. of slots	1	1
Colour	Grey	Grey
Order no.	187595	187705
	LTW 180-2 PS	LTW 180-2og PS
No. of slots	2	2
Colour	Grey	Grey
Order no.	187605	187715
	LTW 180-3 PS	LTW 180-3og PS
No. of slots	3	3
Colour	Grey	Grey
Order no.	187615	187725
	LTW 180-5 PS	LTW 180-5og PS
No. of slots	5	5
Colour	Grey	Grey
Order no.	187625	187735



"og"-type lengthwise dividers, for containers with hand holes (shown in use in an LTB container)

QTW 130-0 PS

Divider height	130 mm
No. of slots	-
Colour	Grey
Order no.	187745

QTW 130-1 PS

No. of slots	1
Colour	Grey
Order no.	187755

QTW 130-2 PS

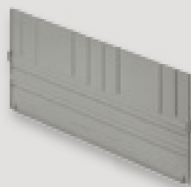
No. of slots	2
Colour	Grey
Order no.	187765

QTW 130-3 PS

No. of slots	3
Colour	Grey
Order no.	187775

QTW 130-5 PS

No. of slots	5
Colour	Grey
Order no.	187795

Crosswise dividers 130 mm

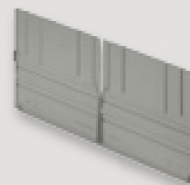
QTW 130-0



QTW 130-2



QTW 130-5



QTW 130-1



QTW 130-3

QTW 180-0 PS

Divider height	180 mm
No. of slots	-
Colour	Grey
Order no.	187805

QTW 180-1 PS

No. of slots	1
Colour	Grey
Order no.	187815

QTW 180-2 PS

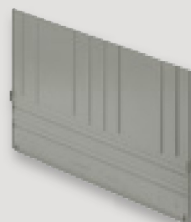
No. of slots	2
Colour	Grey
Order no.	187825

QTW 180-3 PS

No. of slots	3
Colour	Grey
Order no.	187835

QTW 180-5 PS

No. of slots	5
Colour	Grey
Order no.	187845

Crosswise dividers 180 mm

QTW 180-0



QTW 180-2



QTW 180-5



QTW 180-1



QTW 180-3

Dividers for basic size 600 x 400 mm

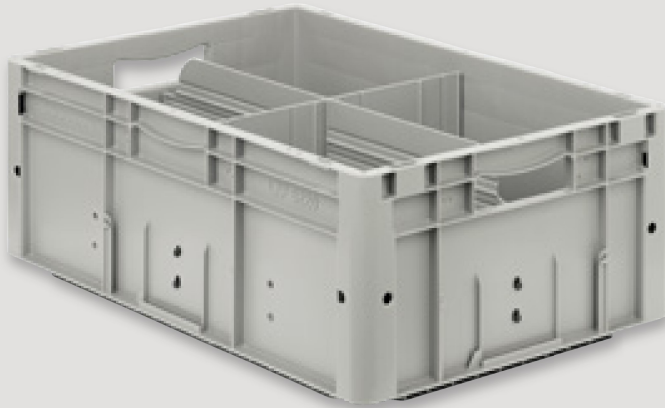
Divider holders



TWH 1 PP for lengthwise and crosswise dividers

Required quantity	2 per divider
Colour	Black
Order no.	187858

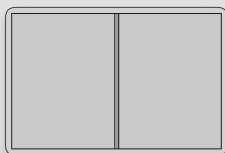
Suggested partitioning for 130 mm dividers



Standard hole pattern for up to 8-way partitioning (3 pairs of holes per long side, 1 per short side)

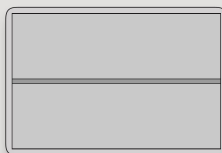
Custom hole patterns are available for orders of 500 containers or more

2-way crosswise partitioning*
Compartment: 278 x 366 mm



1x QTW 130-0
2x TWH 1

2-way lengthwise partitioning*
Compartment: 566 x 178 mm



1x LTW 130-0
2x TWH 1

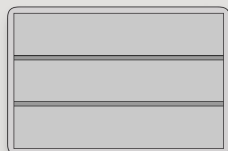
3-way crosswise partitioning
Compartment: 182 x 366 mm



2x QTW 130-0
4x TWH 1

3-way lengthwise partitioning

Compartment: 566 x 115 mm

2x LTW 130-0
4x TWH 1**4-way crosswise partitioning***

Compartment: 134 x 366 mm

3x QTW 130-0
6x TWH 1**4-way lengthwise partitioning**

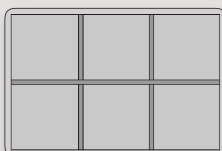
Compartment: 566 x 84 mm

3x LTW 130-0
6x TWH 1**4-way partitioning***

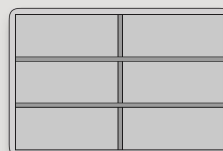
Compartment: 278 x 178 mm

1x QTW 130-1
1x LTW 130-1
4x TWH 1**6-way crosswise partitioning**

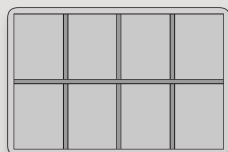
Compartment: 182 x 178 mm

2x QTW 130-1
1x LTW 130-2
6x TWH 1**6-way lengthwise partitioning**

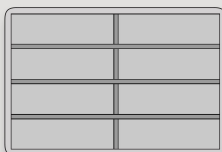
Compartment: 278 x 115 mm

1x QTW 130-2
2x LTW 130-1
6x TWH 1**8-way crosswise partitioning***

Compartment: 134 x 178 mm

3x QTW 130-1
1x LTW 130-3
8x TWH 1**8-way lengthwise partitioning**

Compartment: 278 x 84 mm

1x QTW 130-3
3x LTW 130-1
8x TWH 1**10-way crosswise partitioning****

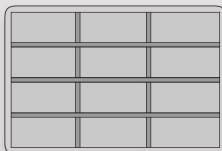
Compartment: 105 x 178 mm

4x QTW 130-1
1x LTW 130-4
10x TWH 1**12-way crosswise partitioning**

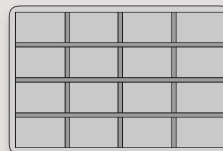
Compartment: 134 x 115 mm

3x QTW 130-2
2x LTW 130-3
10x TWH 1**12-way lengthwise partitioning**

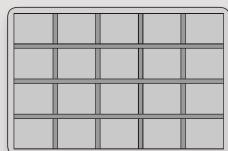
Compartment: 182 x 84 mm

2x QTW 130-3
3x LTW 130-2
10x TWH 1**16-way partitioning**

Compartment: 134 x 84 mm

3x QTW 130-3
3x LTW 130-3
12x TWH 1**20-way partitioning****

Compartment: 105 x 84 mm

4x QTW 130-3
3x LTW 130-4
14x TWH 1

* Achievable with standard hole pattern

** Only possible with 130-mm-high dividers



B92